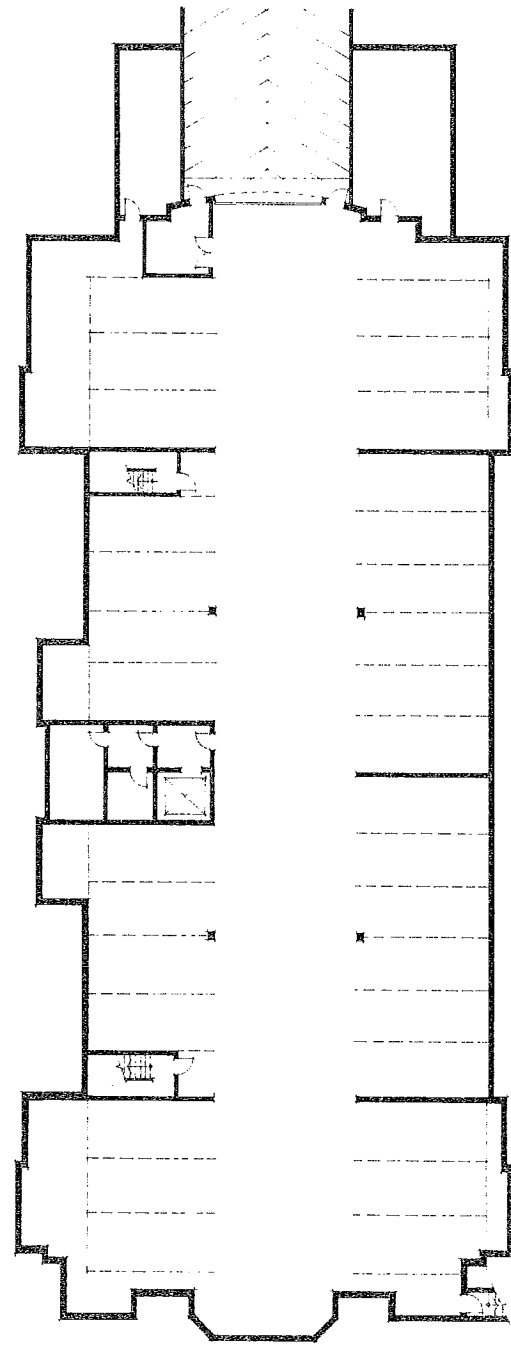


PARKING LEVEL



FULTON HOUSE



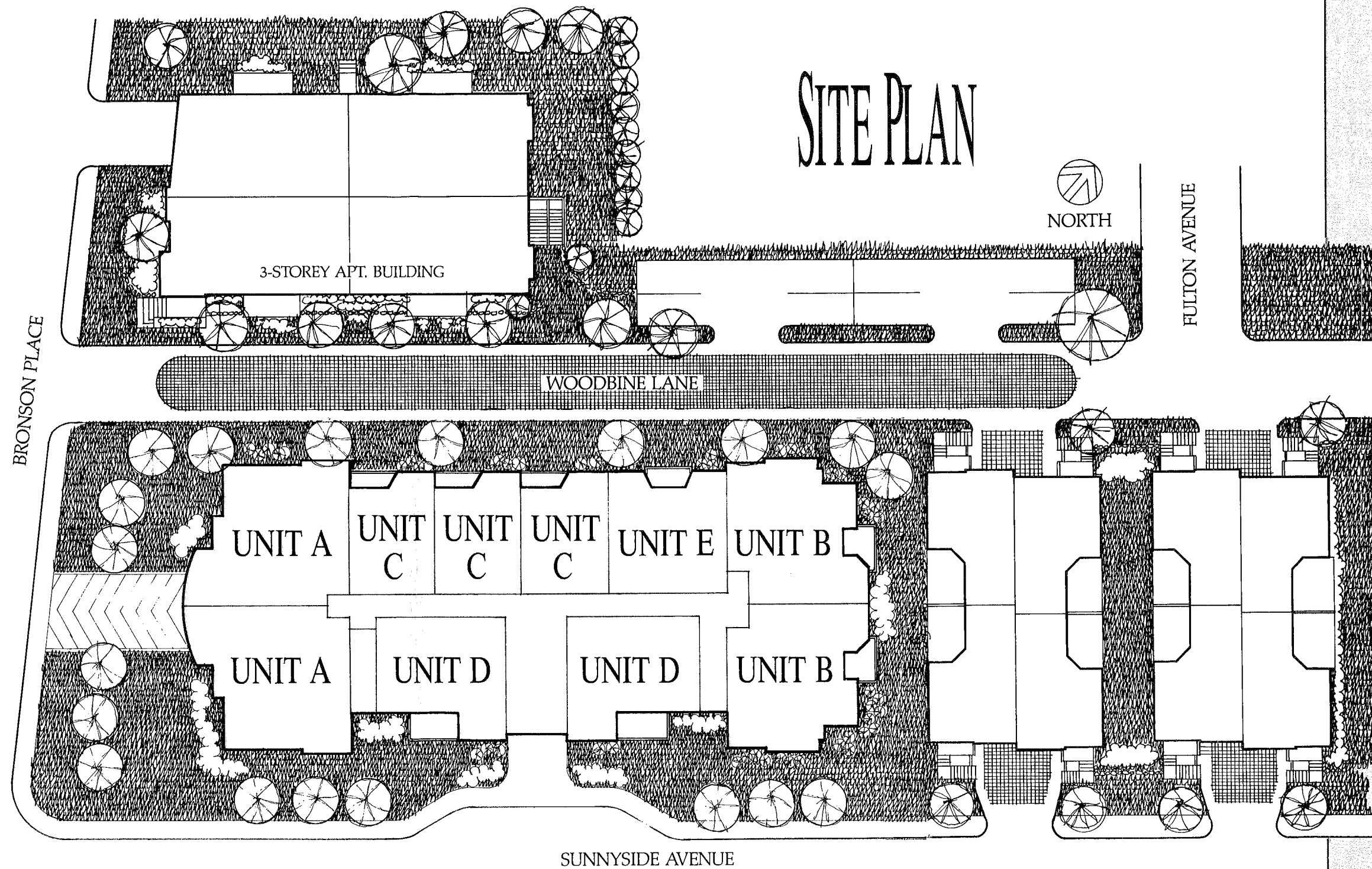
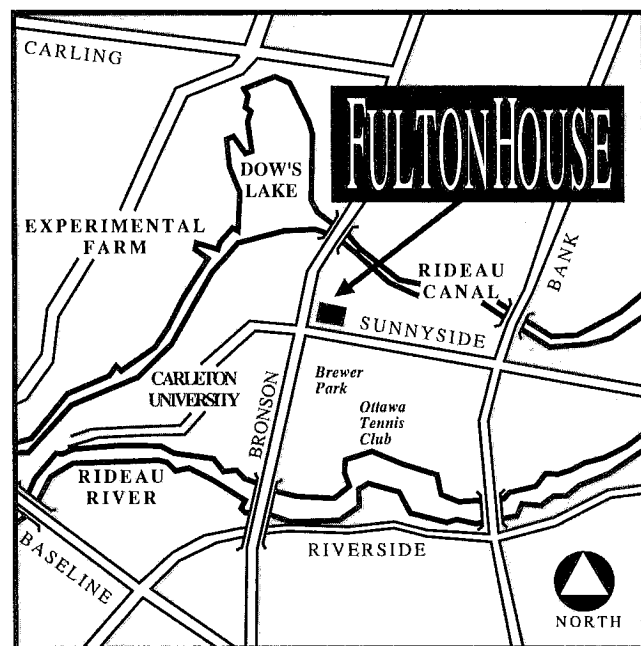
CONDOMINIUM
APARTMENT RESIDENCES

FULTON HOUSE

Presented by Rideau Glen Developments, a joint venture company of award-winning Architect, Barry Hobin and Masterbuilder, Allan Bateman Construction.

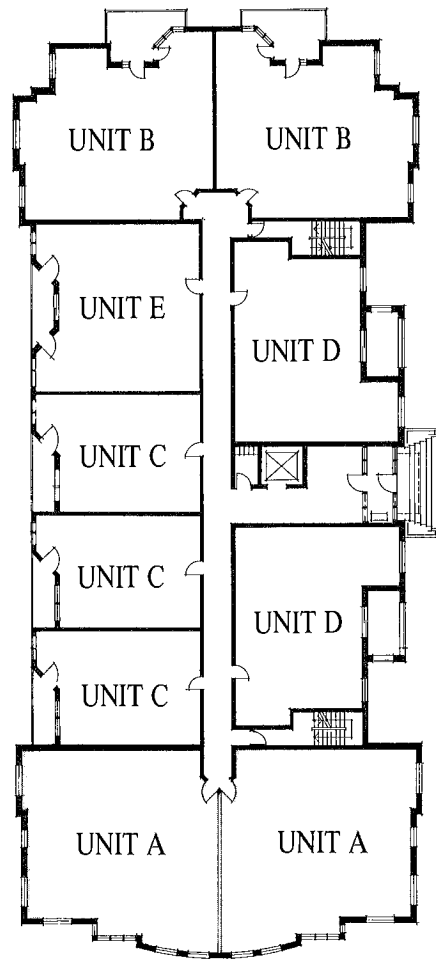
Situated in the heart of old Rideauville, now known as Ottawa South, **Fulton House** is surrounded by wonderful cultural and recreational opportunities. Steps from the peaceful beauty of Dow's Lake, the Rideau River and the campus of Carleton University, this exciting new condominium apartment community cleverly combines the traditional charm of Ottawa South with the convenience of contemporary living.

Fulton House is an exclusive three storey building of only thirty apartments in five exciting models offering large, airy rooms, gourmet kitchens, balconies, ensuite storage, underground parking and superb finishes throughout.

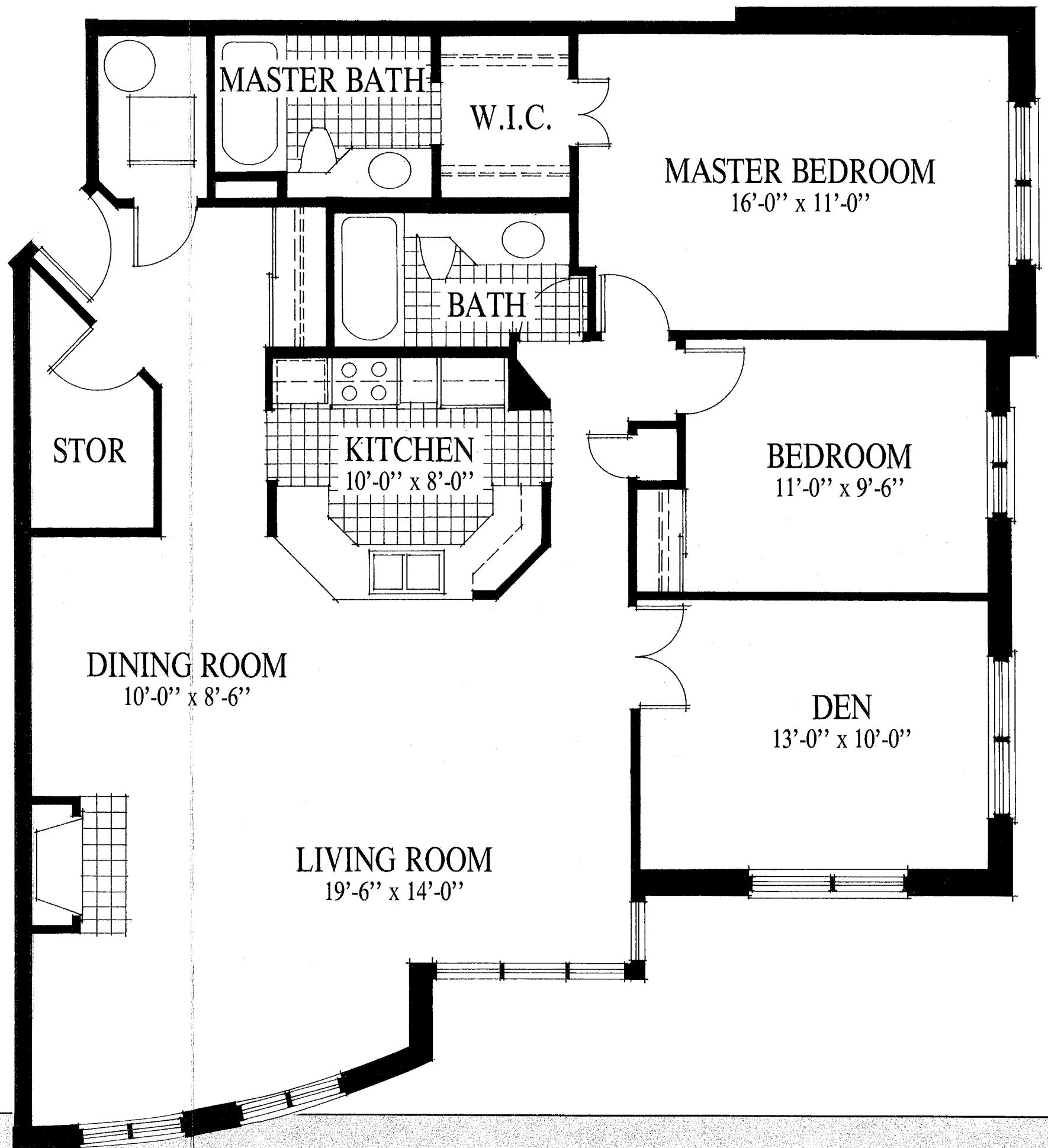


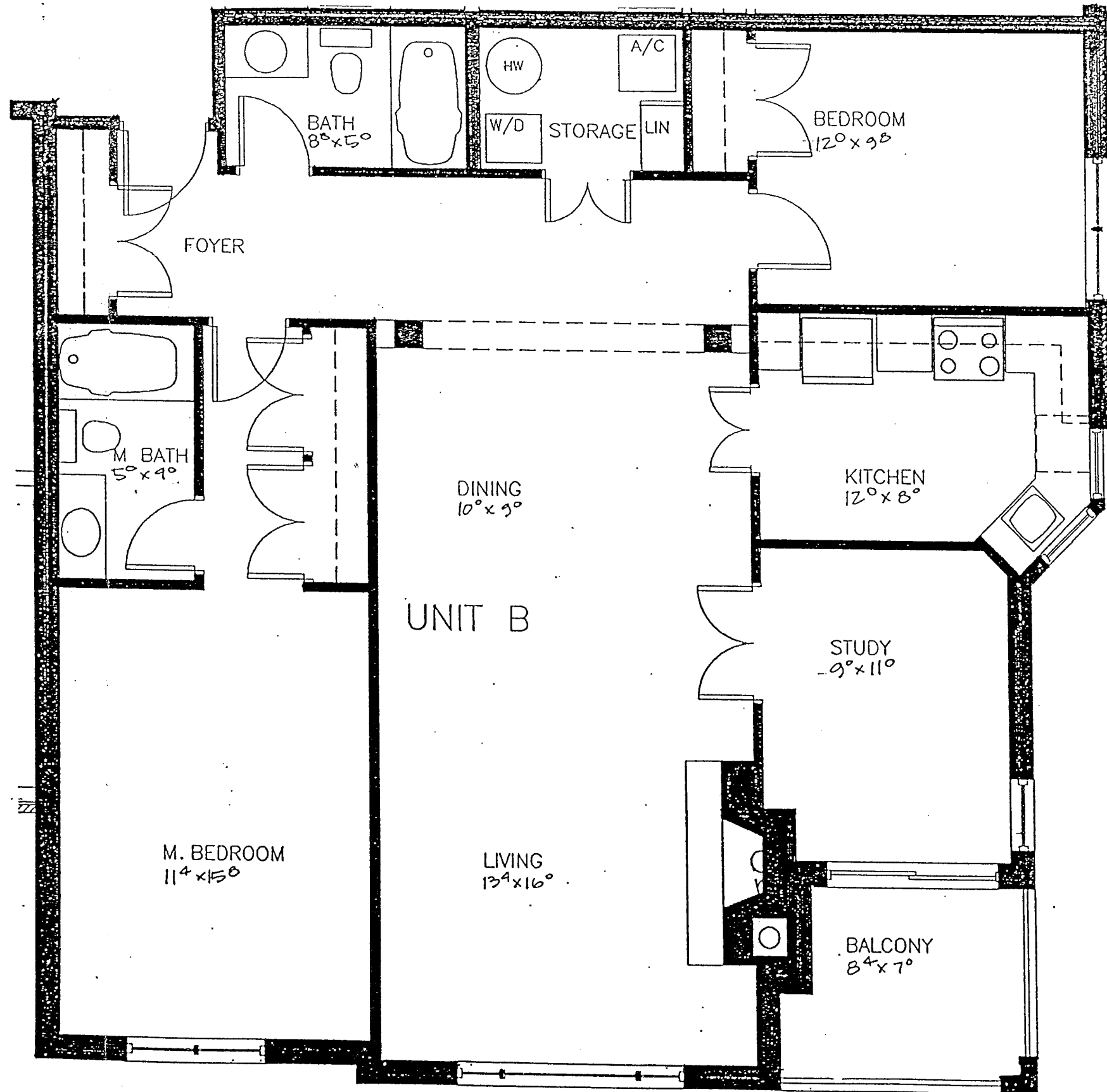
THE HARVARD

UNIT · A
TWO BEDROOM



FULTONHOUSE



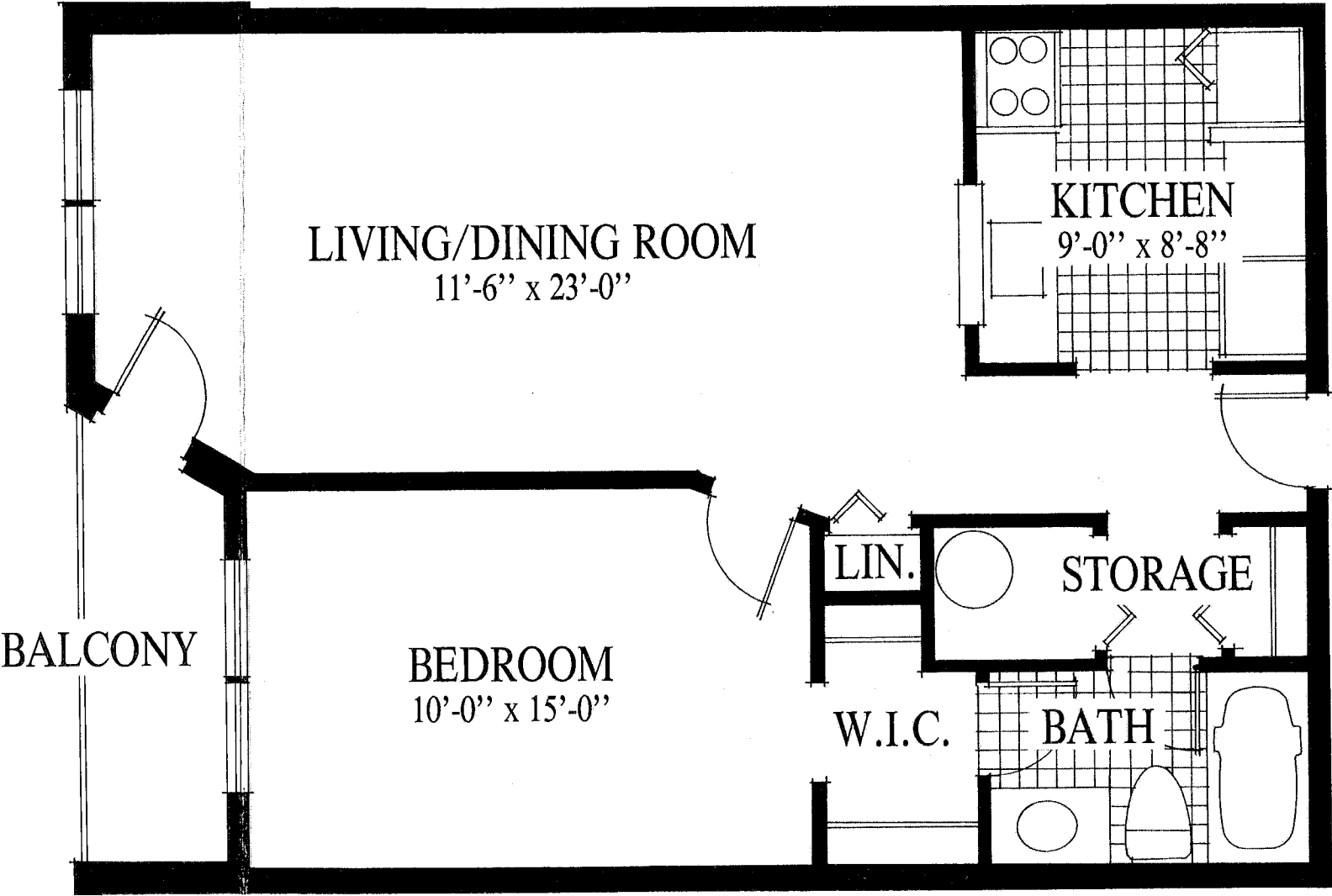
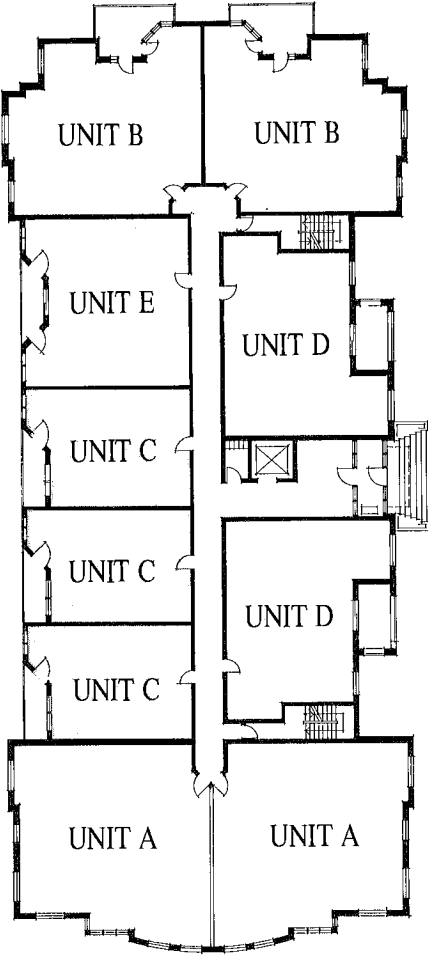


THE GROSVENOR

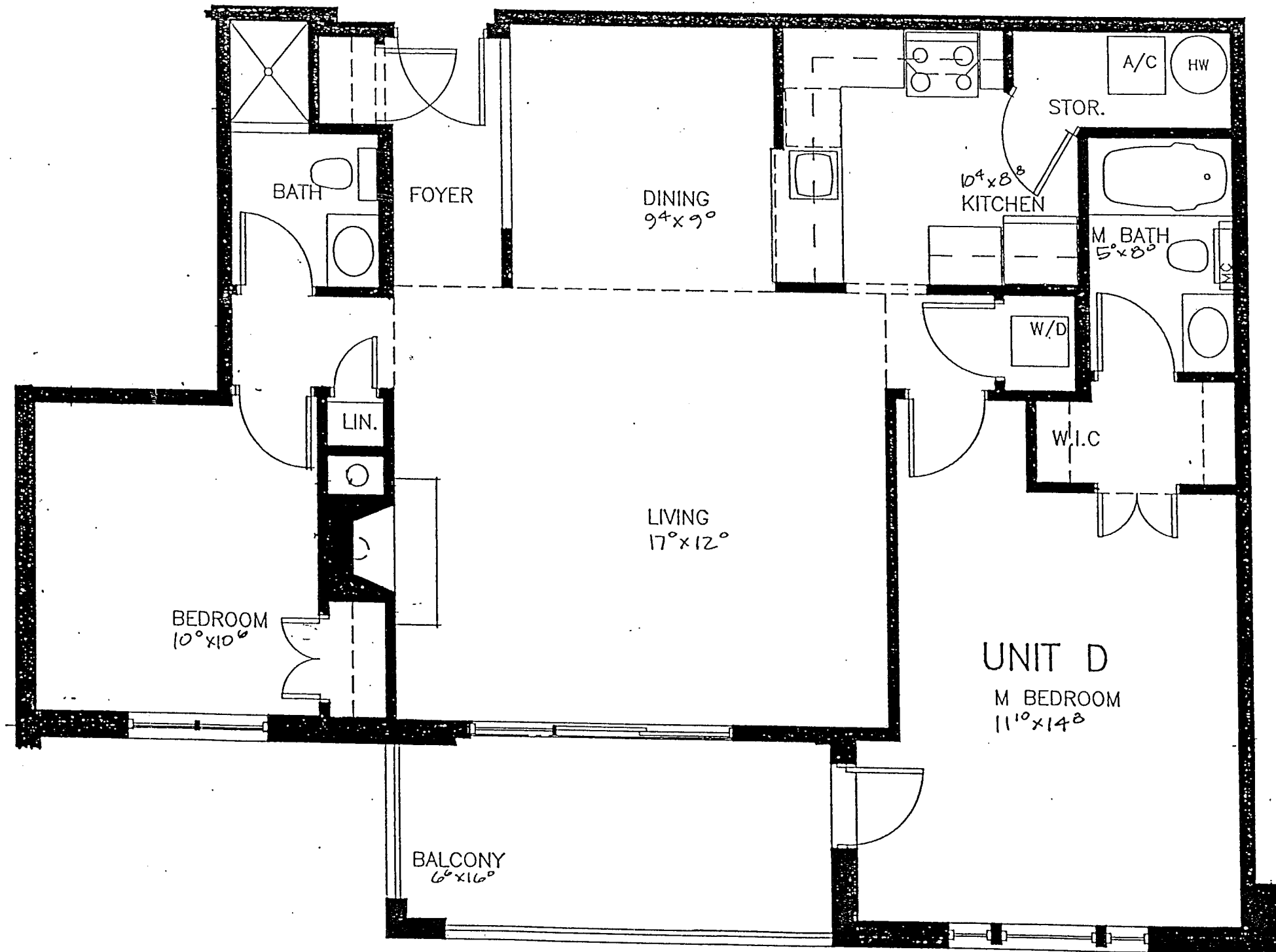
U N I T · B
TWO BEDROOM

THE CAMERON

U N I T • C
O N E B E D R O O M



FULTON HOUSE

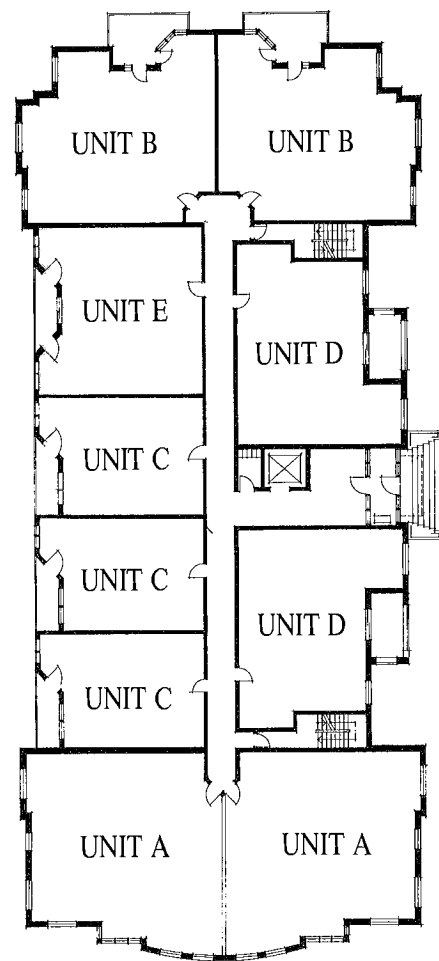


THE WINDSOR

U N I T . D
 T W O B E D R O O M

THE SENECA

UNIT • E TWO BEDROOMS



FULTONHOUSE

