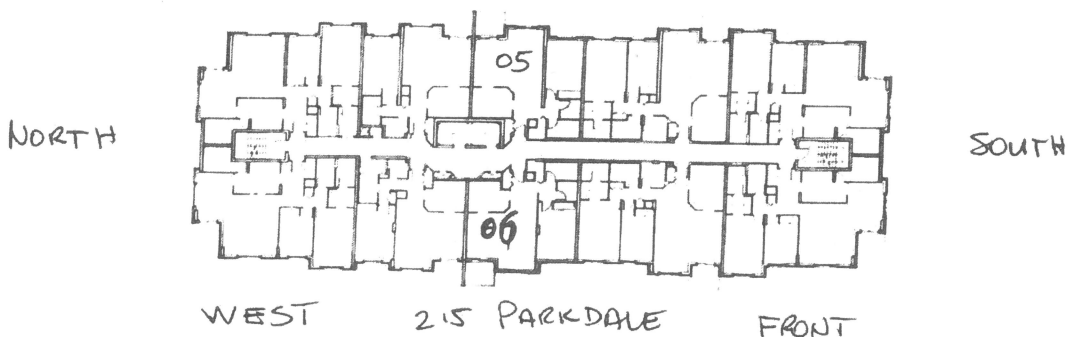


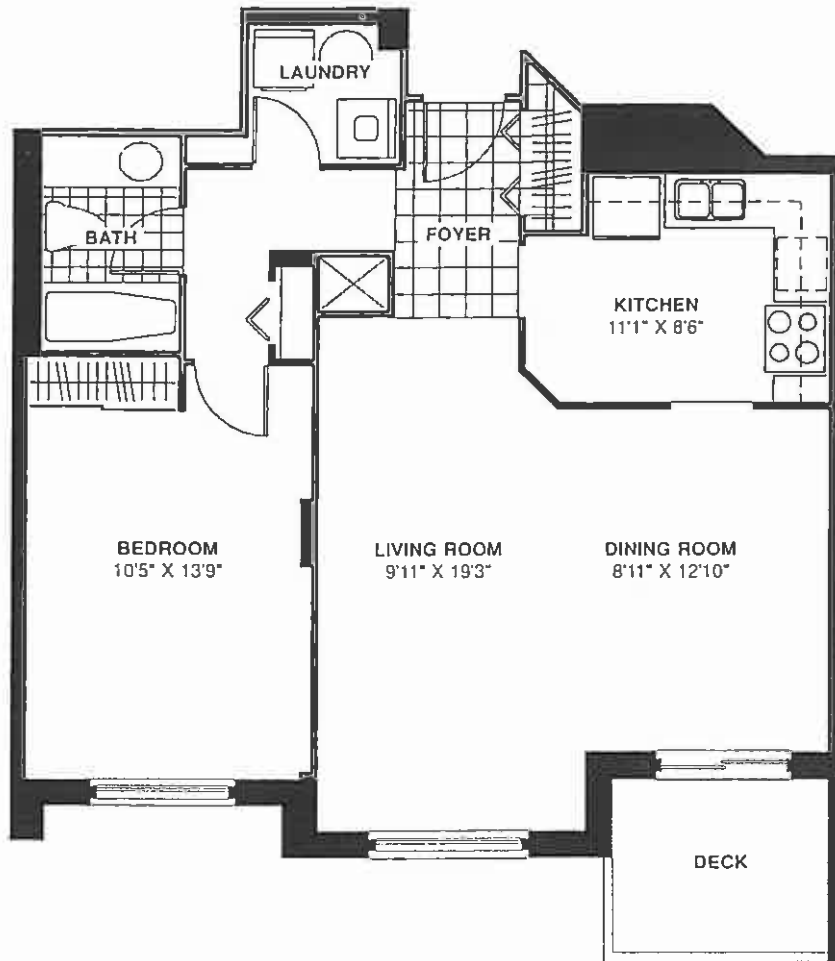
UNITS 05
06

**THE AMBERLY • 810 SQ. FT.
INCLUDES:**

- Individually controlled baseboard electric heaters
- Central air conditioning
- All appliances - refrigerator, stove, dishwasher, washer and dryer
- Balconies with aluminium and glass railings
- Pre-wired telephone and cable outlets
- Elegant entry door with brass hardware and security dead bolt
- Colonial baseboard and doors with brass hardware
- Italian ceramic in every bathroom and foyer
- Resilient floors in kitchen and utility rooms
- Good quality wall to wall carpet
- Sliding closet doors
- Colonial bifold doors on linen closet
- Ensuite utility rooms

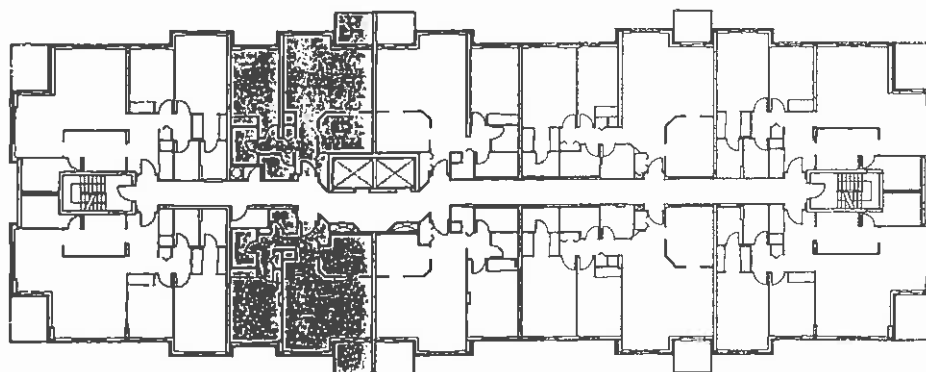
EAST

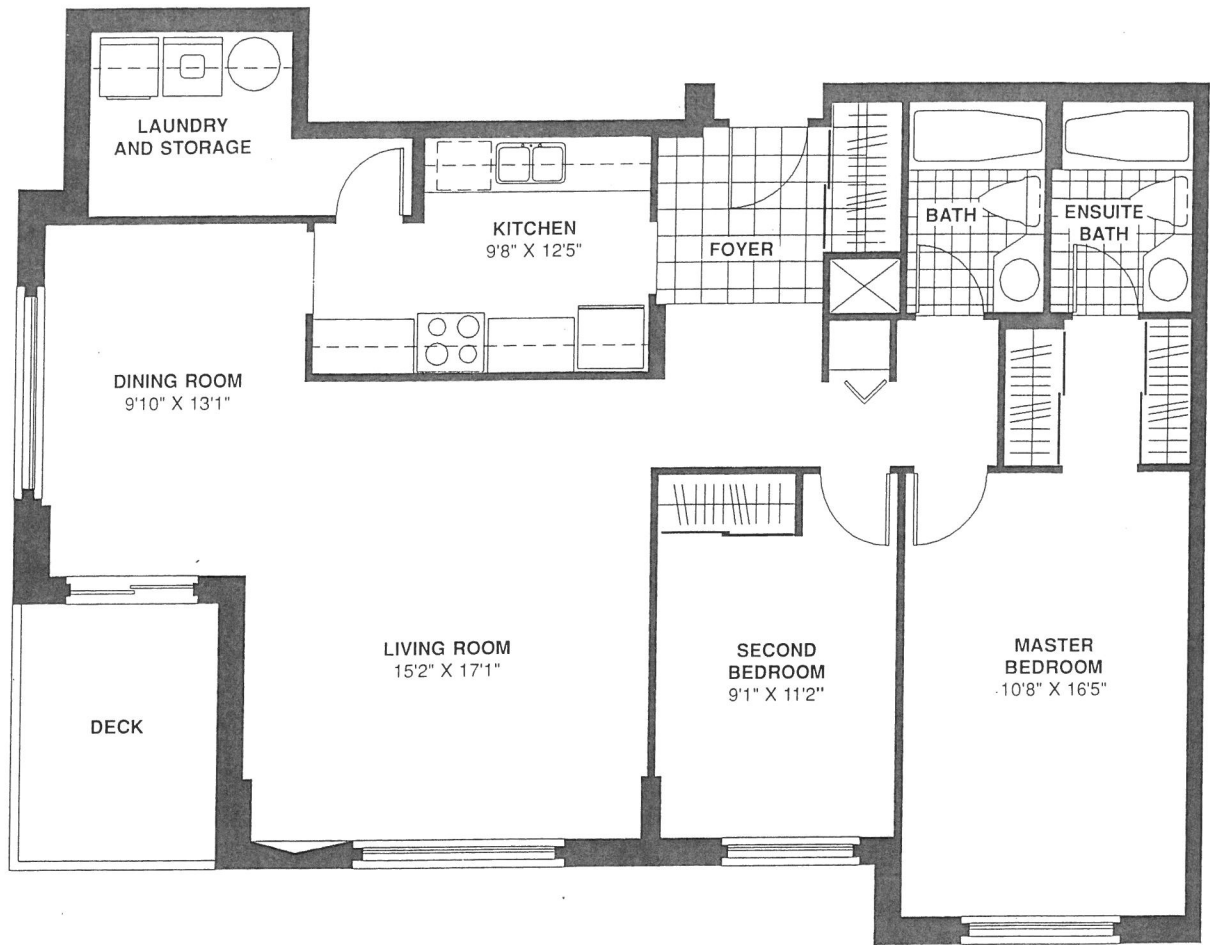




***THE BAYLIE • 807 SQ. FT.
INCLUDES:***

- Individually controlled baseboard electric heaters
- Central air conditioning
- All appliances - refrigerator, stove, dishwasher, washer and dryer
- Balconies with aluminium and glass railings
- Pre-wired telephone and cable outlets
- Elegant entry door with brass hardware and security dead bolt
- Colonial baseboard and doors with brass hardware
- Italian ceramic in every bathroom and foyer
- Resilient floors in kitchen and utility rooms
- Good quality wall to wall carpet
- Sliding closet doors
- Colonial bifold doors on linen closet
- Ensuite utility rooms





THE SCOTTSDALE • 1192 SQ. FT.

