

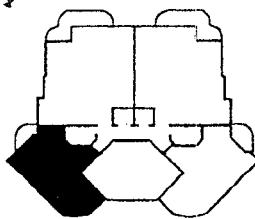
* SEE SPECIFICATIONS FOR APPLIANCES
 * ALL MEASUREMENTS ARE APPROXIMATE E & O.E.



COMMODORE'S
QUAY



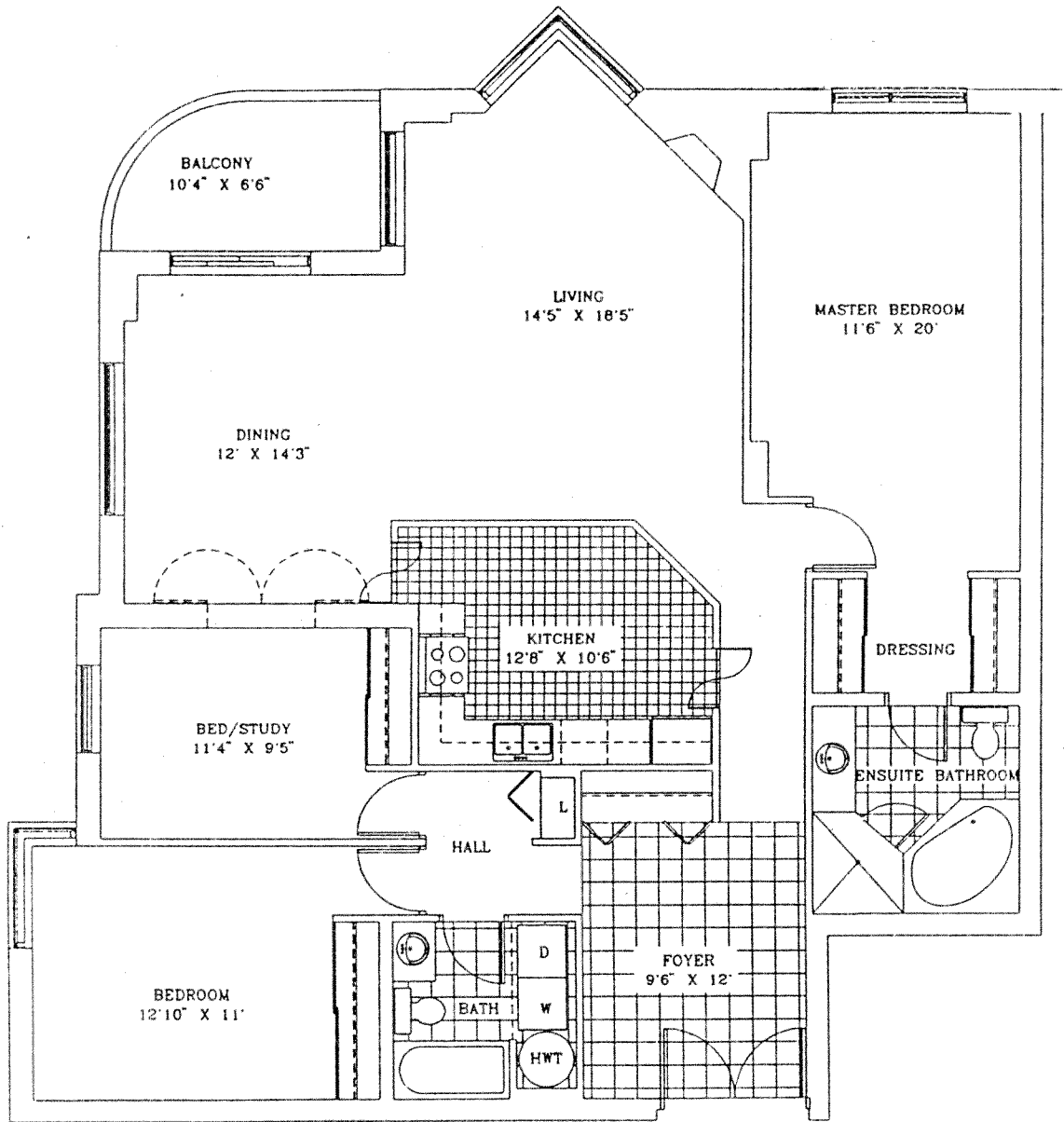
OTTAWA RIVER



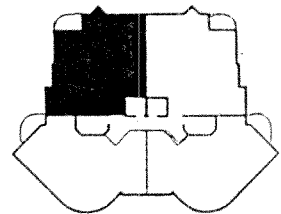
CARLING AVENUE

THE HALIFAX SUITE

COMMODORE BUILDING
 LEVEL 1 TO 14
 1147 SQUARE FEET



- * SEE SPECIFICATIONS FOR APPLIANCES
- * ALL MEASUREMENTS ARE APPROXIMATE E. & O.E.



THE SAN FRANCISCO SUITE

COMMODORE BUILDING
LEVEL 15,16 & 17

1685 SQUARE FEET





COMMODORE'S
QUAY

Specifications

The Quay and Commodore buildings.

EACH SUITE FEATURES:

- Video entry phone system
- Hand-laid European marble foyer
- Wall-to-wall 40 oz carpeting throughout
- Colonial style interior doors and trim, Dentil Cornice mouldings in living and dining rooms
- Brass handles on all swing doors
- Individually controlled air-conditioning and heating for each suite
- In-suite security system including motion detectors
- Mirrored closet doors
- All light fixtures except dining room
- One interior assigned parking space
- One assigned storage locker
- Ensuite laundry room
- Fireplace with marble surround or hardwood mantle

KITCHEN

- Kitchen with European style cabinetry
- Stainless-steel double sink with single faucet
- No-wax cushion flooring
- Microwave oven
- Built-in dishwasher
- Valance lighting over kitchen counters

MASTER ENSUITE BATHROOM

- European marble floor-to-ceiling and wall-to-wall
- Marble vanity counter top
- Bevelled mirrors
- Whirlpool bathtub
- Brass faucets and hardware

MAIN BATHROOM

- Large mirror with valance lighting
- Marble vanity counter top
- Brass faucets and hardware

COMMODORE PENTHOUSE UNITS ALSO INCLUDE:

- Key access in elevators to Penthouse floors
- Two (2) assigned indoor parking spaces
- Built-in oven and cook top

GENERAL BUILDING DETAILS

- Waterfront location
- Underground parking with security cameras
- Ontario new home warranty program (Five-year warranty)
- Large balconies