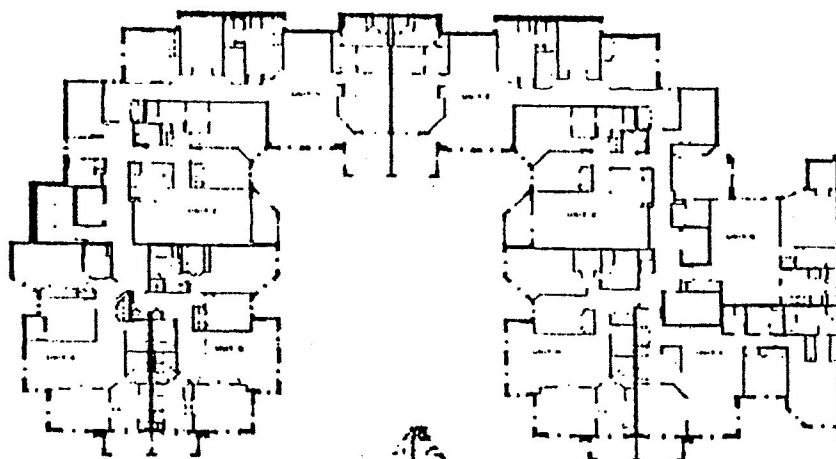
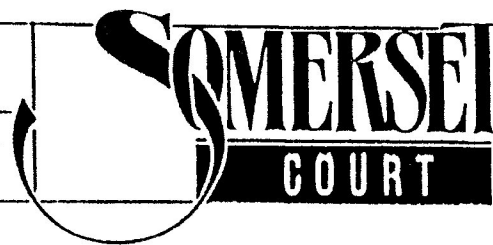


MODEL B

1318 SQUARE FEET



Timberlay

TIMBERLAY DEVELOPMENTS LIMITED

E. & O.E.

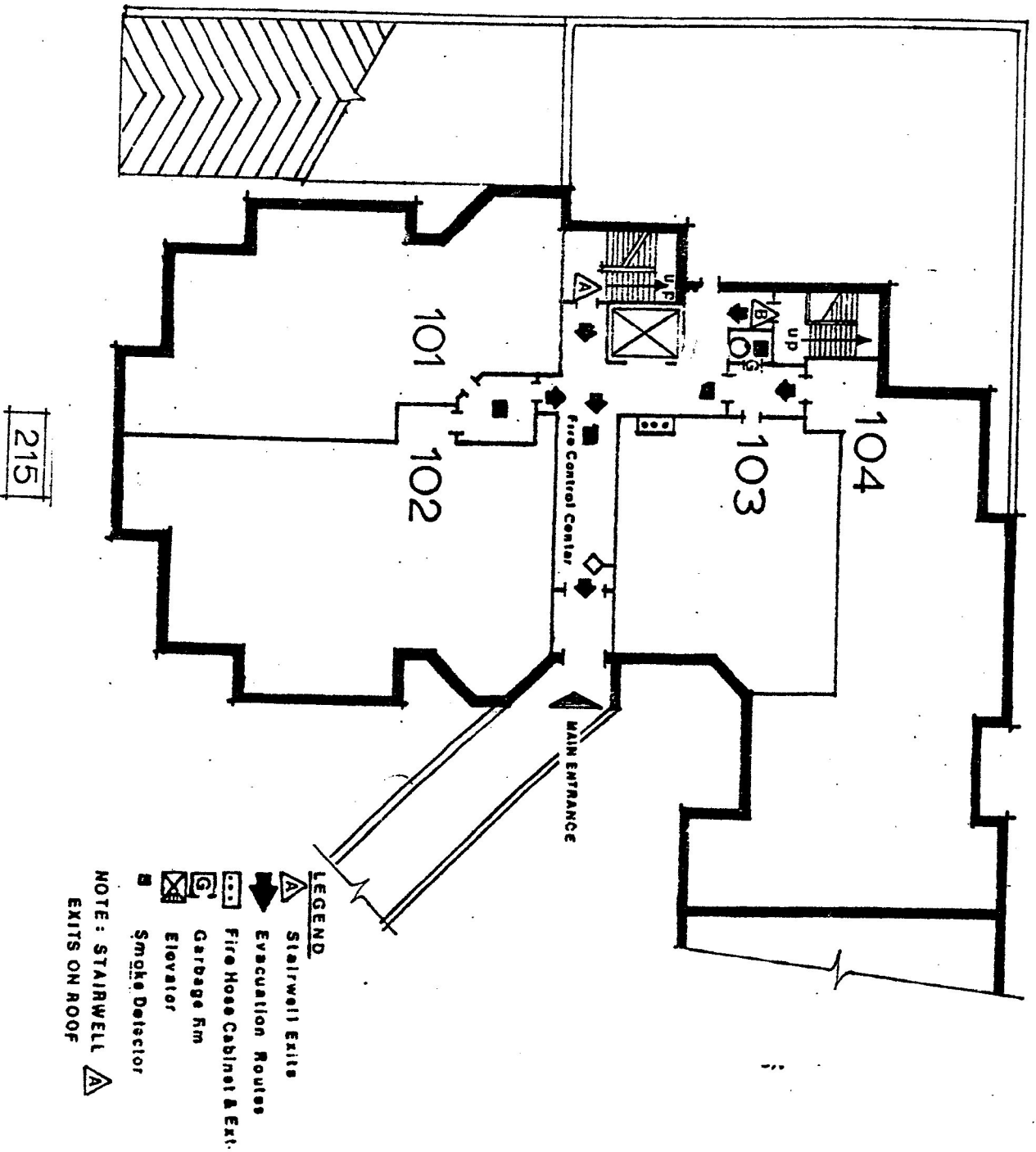
1000 BAYVIEW AVENUE, SUITE 100, SCARBOROUGH, ONTARIO M1S 1B2 TEL: (416) 291-2000

#102 - 215 Somerset Street West

The subject is a main level condominium apartment in Timberlay Development's Somerset Court in Ottawa's Centre town. This stately low rise building is designed in a "U" shape set back from the street with an attractively landscaped, interlocking brick entry courtyard.

The apartment (a B unit) enjoys a south east orientation overlooking the courtyard and Somerset Street. High quality construction, finishing and workmanship are evident in the choice of materials, such as solid core panel relief doors, wooden casement style windows, heavy weight broadloom and ceramic tile. With a spacious practical floor plan and features appealing to many buyers, this executive style accommodation was a HUDAC award winner in an excellent inner city location.

EMERGENCY EVACUATION PLAN



GROUND FLOOR PLAN

