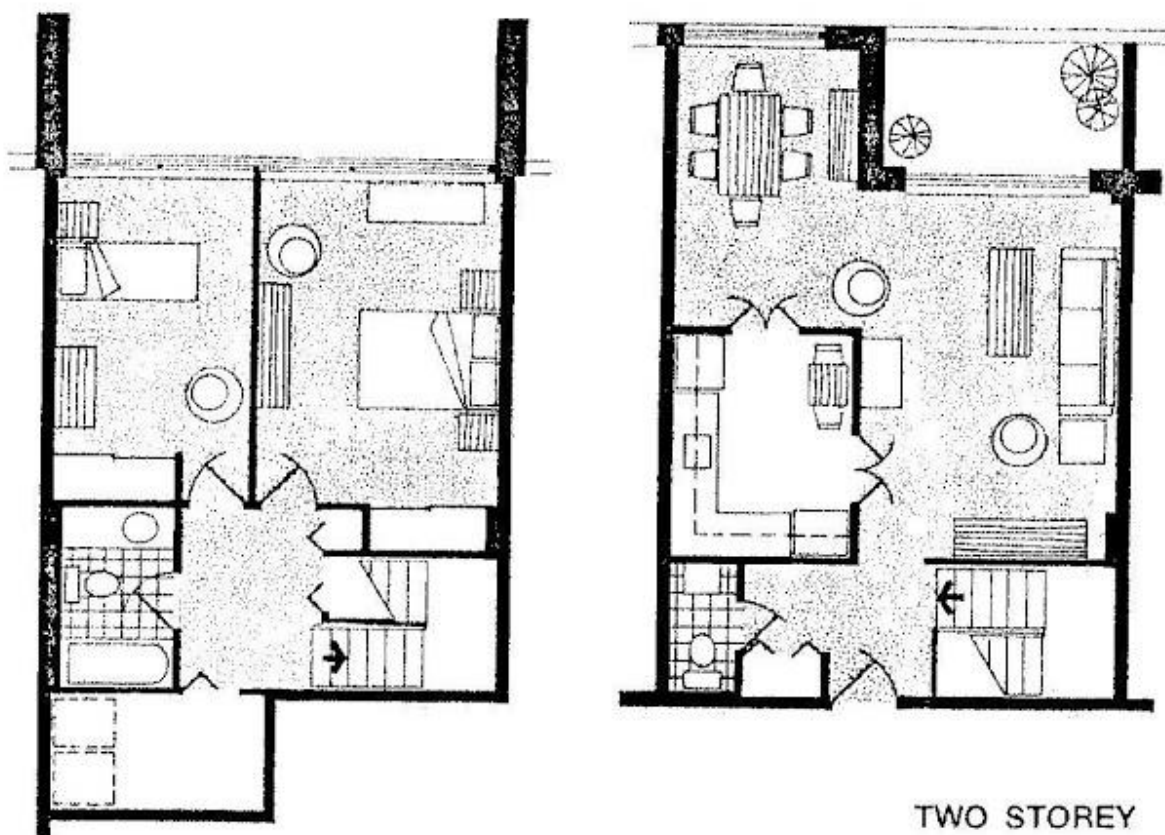


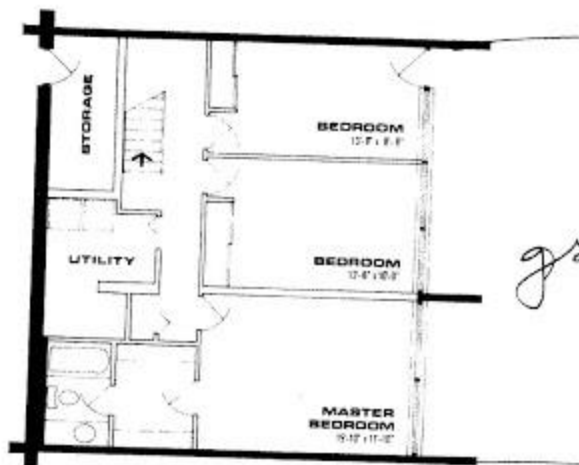
ONE STOREY

Spacious two-bedroom homes with a commodious living room exiting onto a large balcony, plus a dining room and separate breakfast area, are featured in this tower suite. En suite storage rooms and large closets, combined with galley-type kitchens, leave nothing to be desired. In addition, there are 3 other variations of this plan available on each tower floor.



For a different approach, a 2-bedroom podium suite with living and dining rooms on the upper level and the sleeping accommodations below, plus a full bathroom and separate powder room, utility room and your own balcony, can be your home at The Highlands. What's more, this is only one of four different designs available in the unique two-storey, two-bedroom plans.





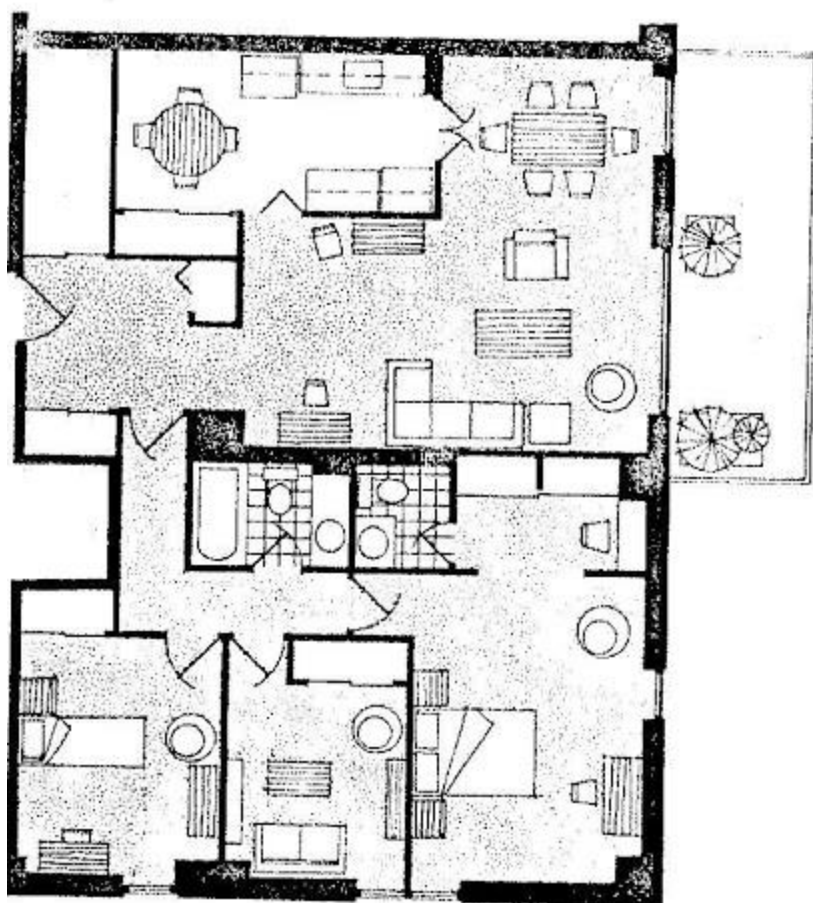
BEDROOM LEVEL



LIVING LEVEL

TOWN HOUSE RA





ONE STOREY

If it is 3 bedrooms, with powder room off the master bedroom, a living room that is 19 feet by 11 feet, and a balcony with a view that you desire, then consider this lower suite. Two versions of the 3-bedroom plan are on each tower floor. Whether you want to watch the sun setting over the Gatineau Hills or rising in the east, that you can have at The Highlands.