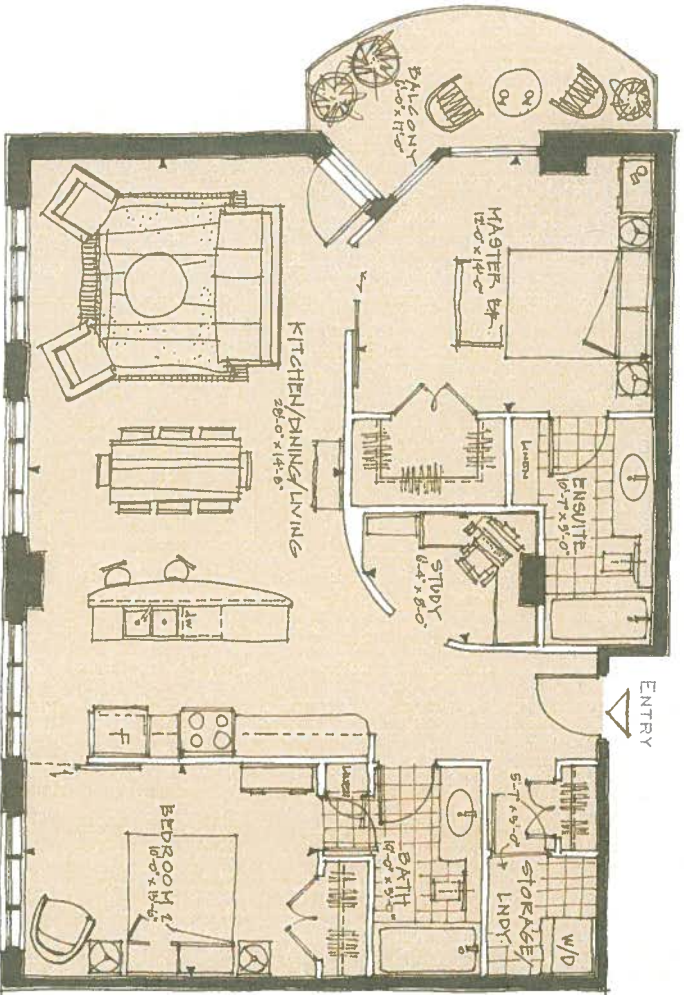


THE ST. ANDREWS II

2ND AND 3RD FLOOR, 1168 SQ. FT.

205 ■ 395



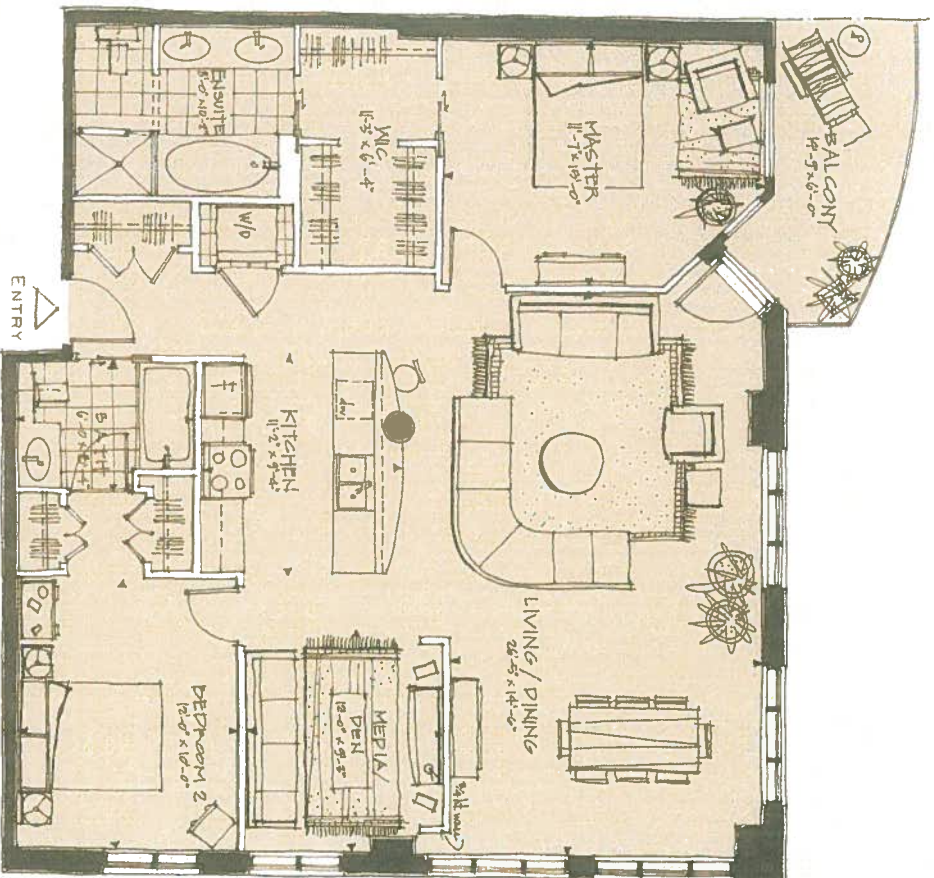
THE GLASGOW



THE BUCHANAN

7TH TO PENTHOUSE FLOOR, 1493 SQ. FT.

211 ■ 311 ■ 406R ■ 411 ■ 505R ■ 509 ■ F103R ■ F103R



*QUARTS WITH REVERSE OF PLAN SHOWN HERE

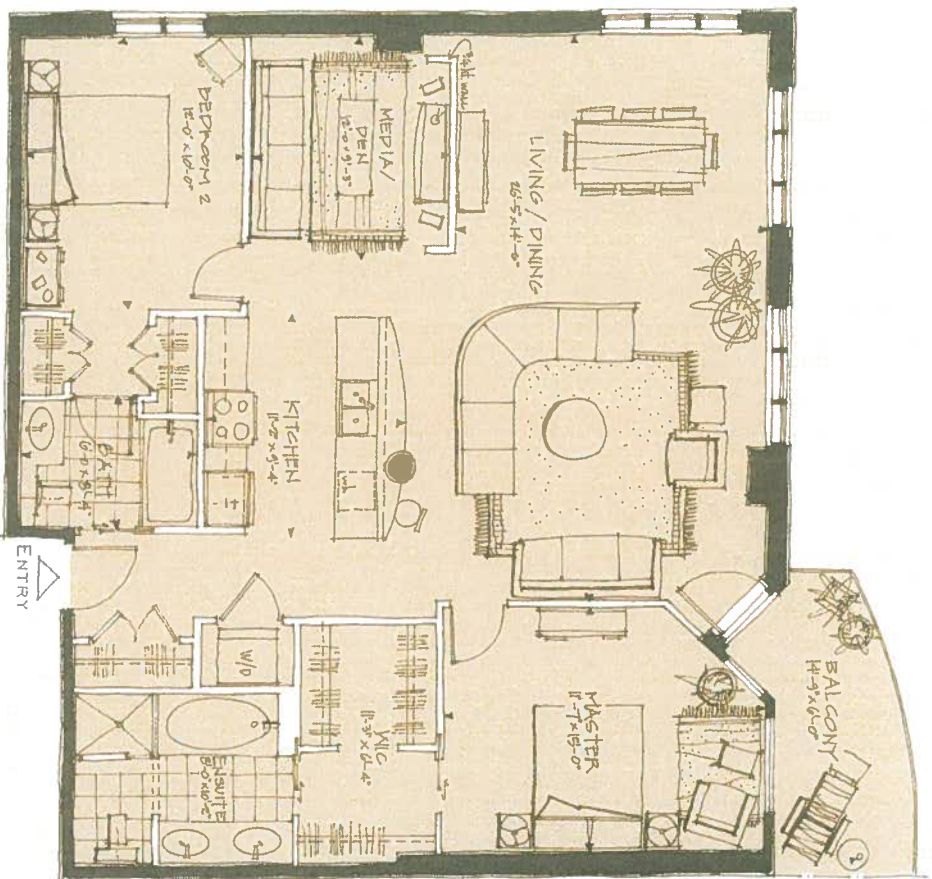
THE GLASGOW



THE BUCHANAN II

2ND AND 3RD FLOOR, 1693 SQ. FT.

206 ■ 556



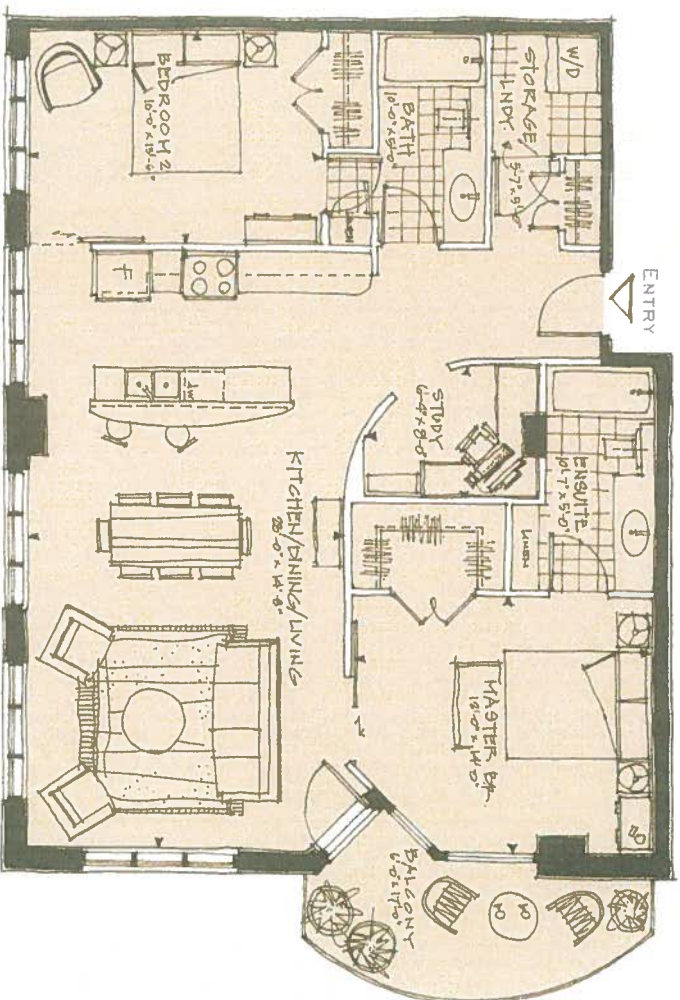
THE GLASGOW



THE ST. ANDREWS

2ND TO PENTHOUSE FLOOR, 1168 SQ. FT.

291 ■ 351 ■ 451 ■ 405R ■ 501 ■ 504R ■ PM01 ■ PH04R



*Units with receiver of plan shown here

THE GLASGOW



NORTH



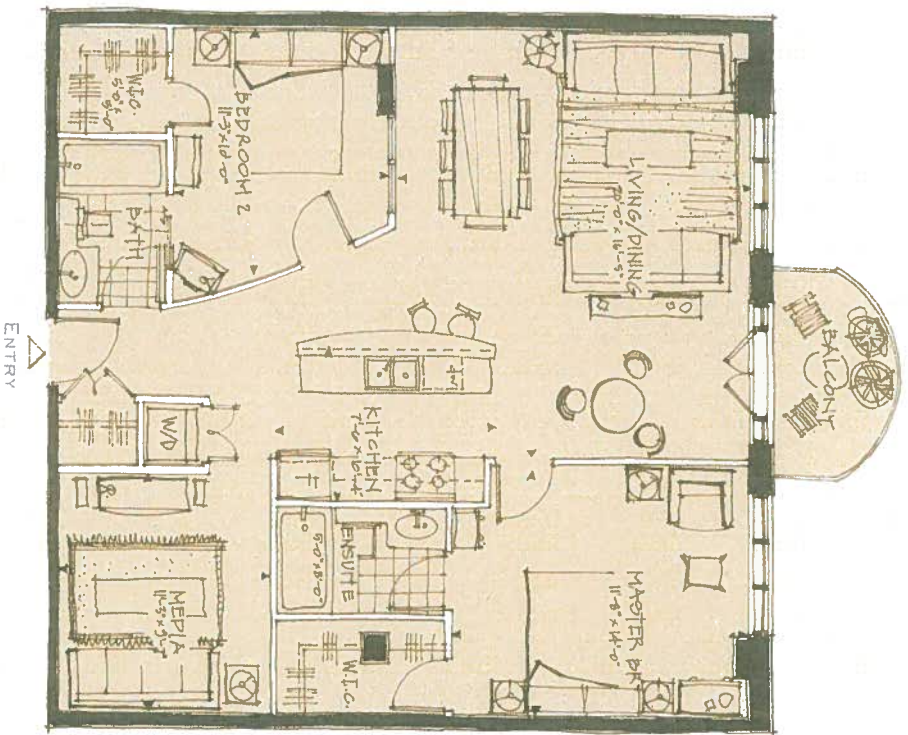
1-89-6



THE HAWTHORN

5TH AND PENTHOUSE FLOOR, 1197 SQ. FT.

587 - PH07



THE GLASGOW



NORTH



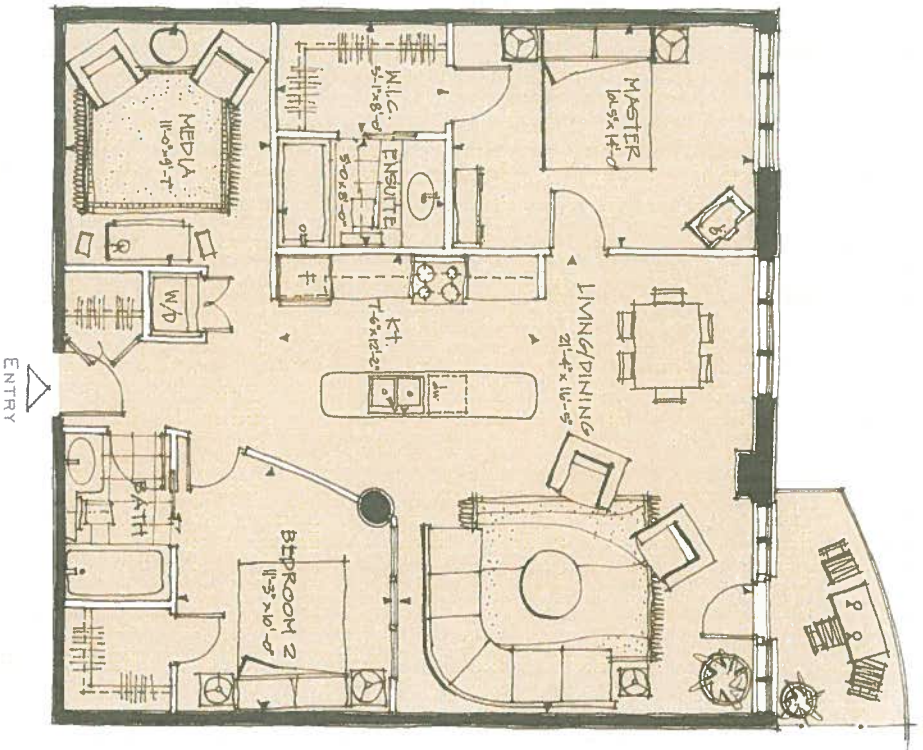
BARRY J. HOBIN
ARCHITECT



THE ARGYLE

5TH AND PENTHOUSE FLOOR, 1197 SQ. FT.

568' ■ 560' ■ PENTHOUSE ■ P1008



*UNITS WITH REVERSE OF PLAN SHOWN HERE

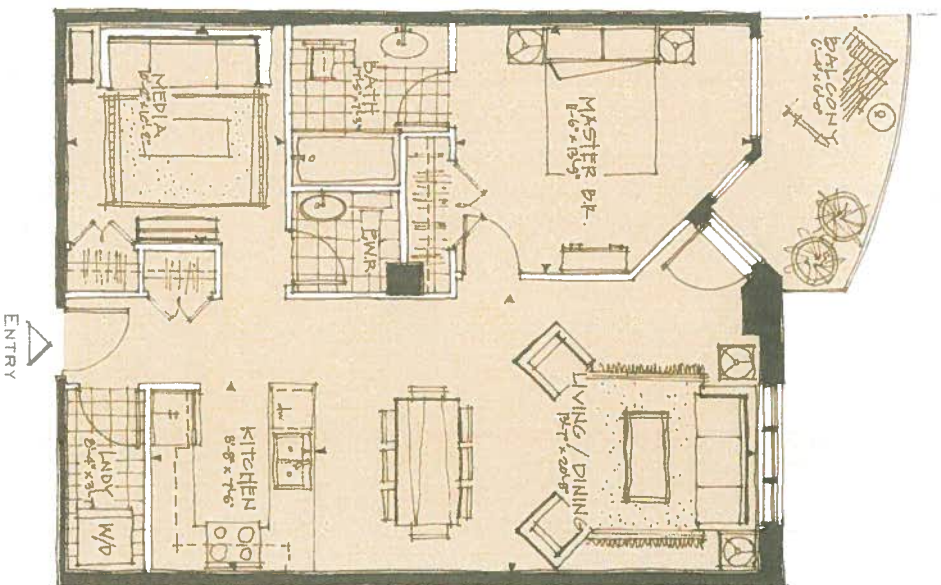
THE GLASGOW



THE CALEDONIA

2ND, 3RD AND 4TH FLOOR, 866 SQ. FT.

2708R ■ 2709 ■ 3068R ■ 309 ■ 4088R ■ 4094



*UNITS WITH REVERSE OF PLAN SHOWN HERE

THE GLASGOW



NORTH

FLOOR

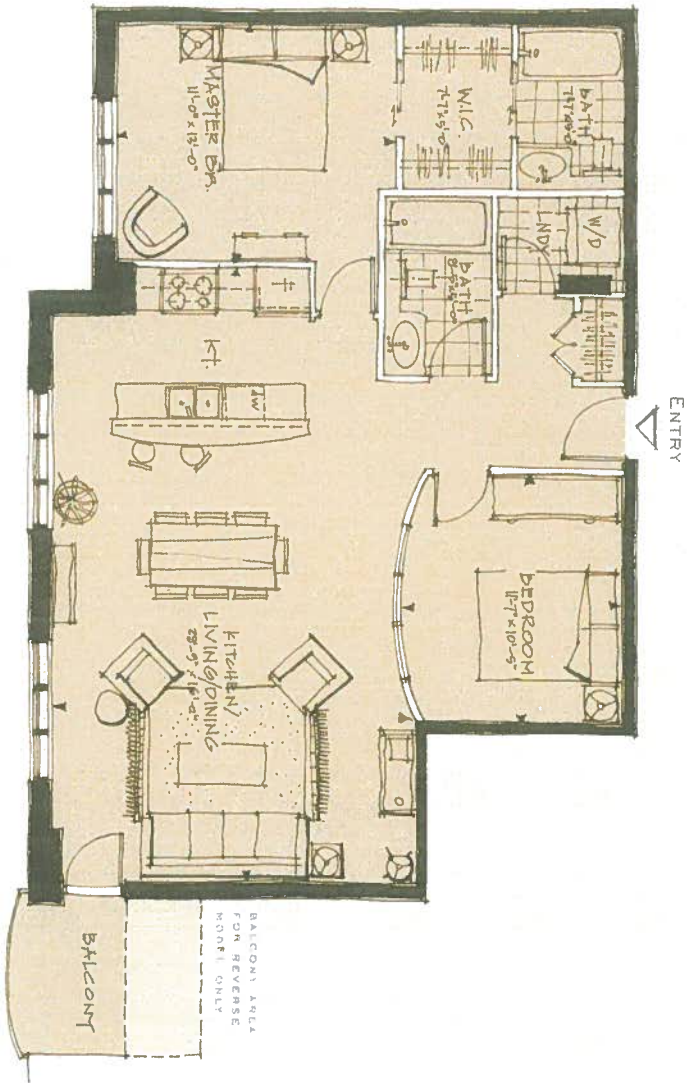


BARRY
FOON
ACCURATE
1994

THE EDINBURGH

5TH AND PENTHOUSE FLOOR, 1949 SQ. FT.

PH01 • PH02 • PH03 • PH04



UNITS WITH REVERSE OF PLAN SHOWN HERE

THE GLASGOW



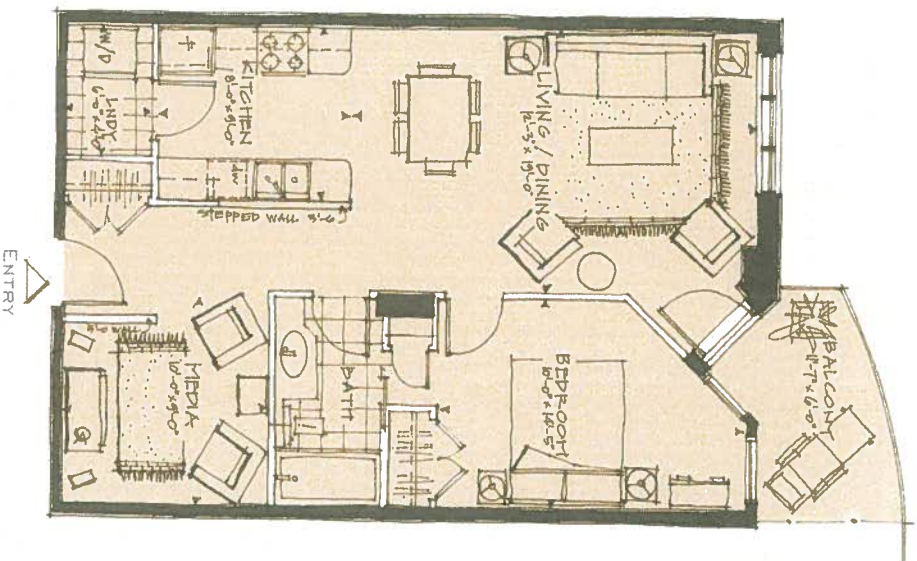
CHRISTOFORT GROUP

BARRY J. HOBIN
 ARCHITECTS
 1000 W. 10TH ST. SUITE 100
 URBANKE

THE BURRELL

2ND, 3RD AND 4TH FLOOR, 762 SQ. FT.

297R ■ 219 ■ 397R ■ 319 ■ 497R ■ 419



UNITS WITH REVERSE OF PLAN SHOWN HERE

THE GLASGOW



NORTH



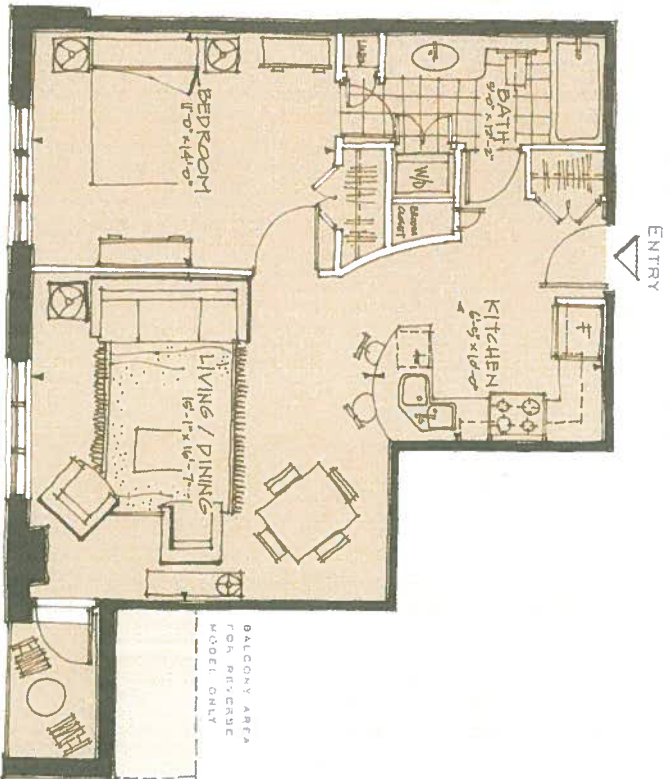
BARRY J. HOBIN
ARCHITECTS
P.L.L.C.

UNBRANKE

THE RENFIELD

2ND, 3RD AND 4TH FLOOR, 700 SQ. FT.

292 ■ 298P ■ 392 ■ 398P ■ 402 ■ 408P



UNITS WITH REVERSE OF PLAN SHOWN HERE

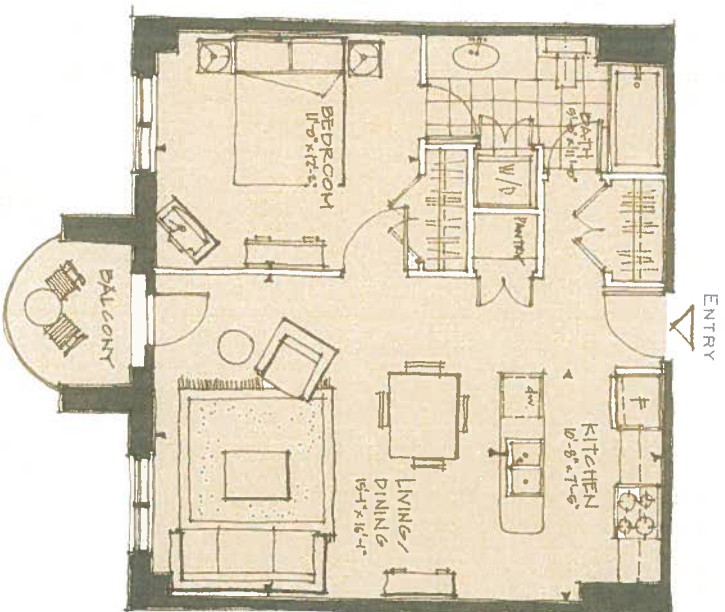
THE GLASGOW



THE EGLINGTON

2ND, 3RD AND 4TH FLOOR, 666 SQ. FT.

293 ■ 393 ■ 493



THE EGLASGOW



UR 001