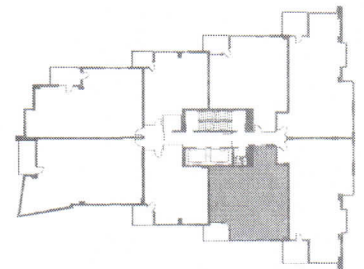
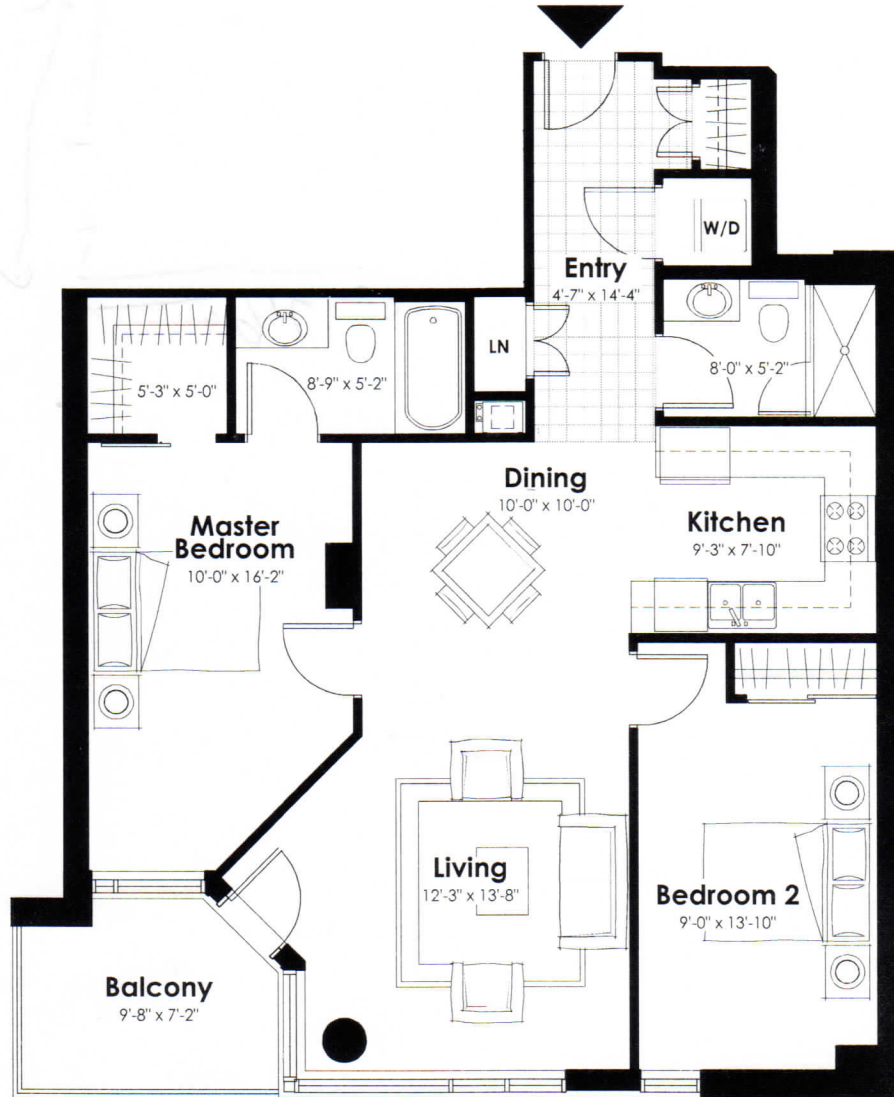


2 Bedrooms + Balcony 967 sq.ft. + 64 sq. ft. Balcony. Total Living Area = 1031 sq. ft.



# Metro Link



**key plan**  
4th to 8th floor

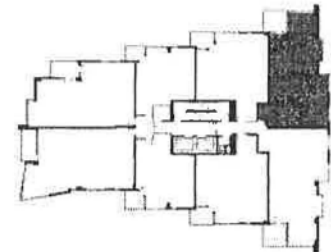
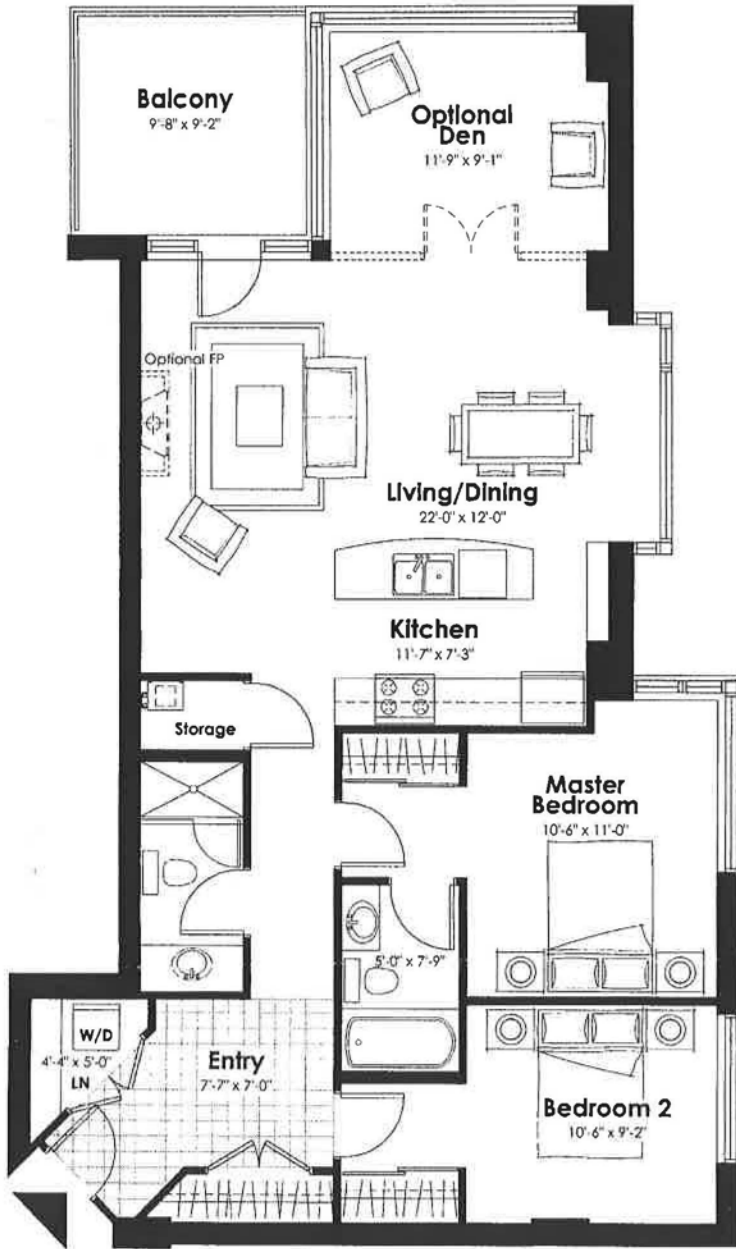
Dimensions noted on plans may vary from final built product.



2 Bedrooms + Den + Balcony 1192 sq.ft. + 82 sq. ft. Balcony. Total Living Area = 1274 sq. ft.



# Northern Star



**key plan**

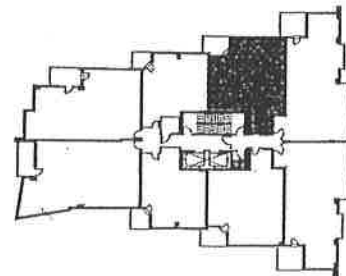
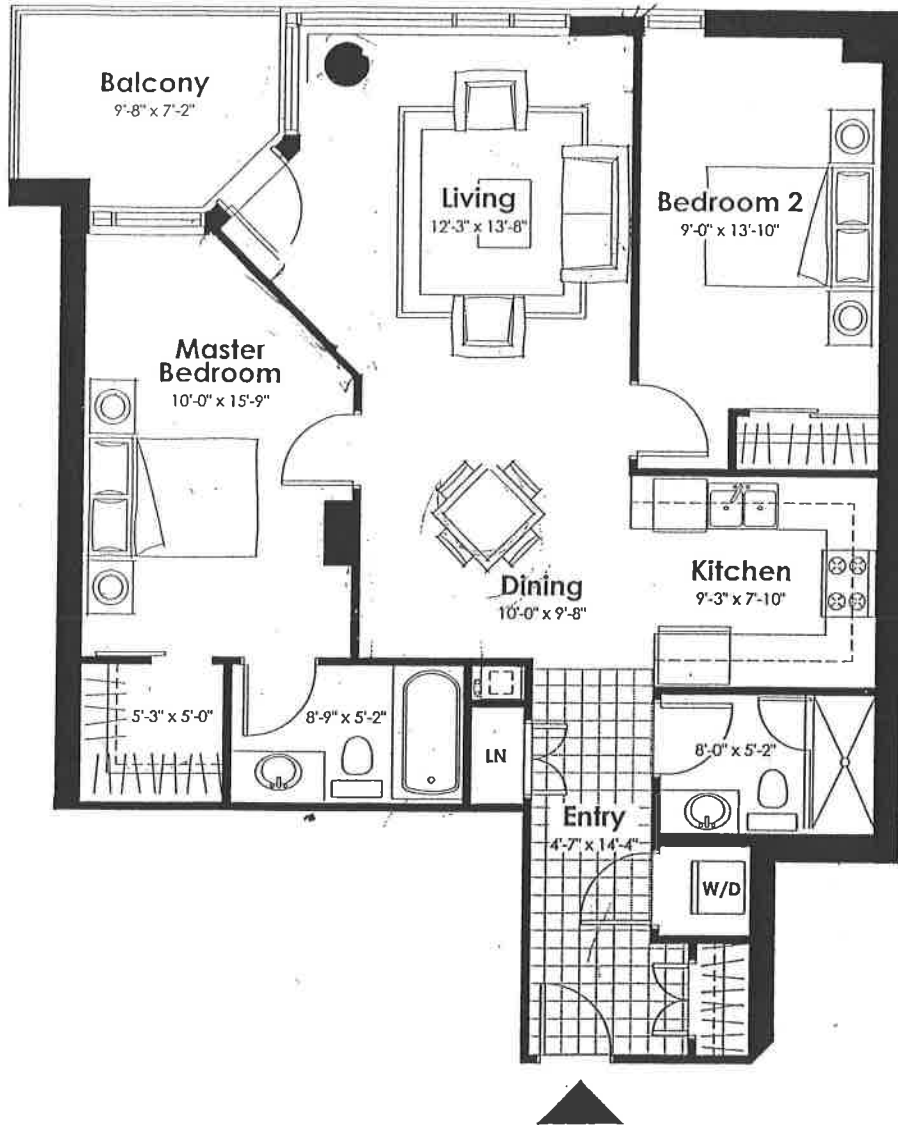
4th to 8th floor

Dimensions noted on plans may vary from final built product.

2 Bedrooms + Balcony 967 sq.ft. + 64 sq. ft. Balcony. Total Living Area = 1031 sq. ft.



# Orient Express



key plan

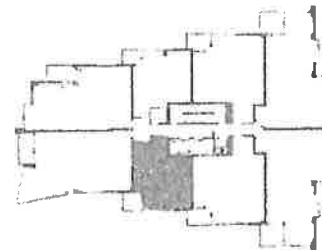
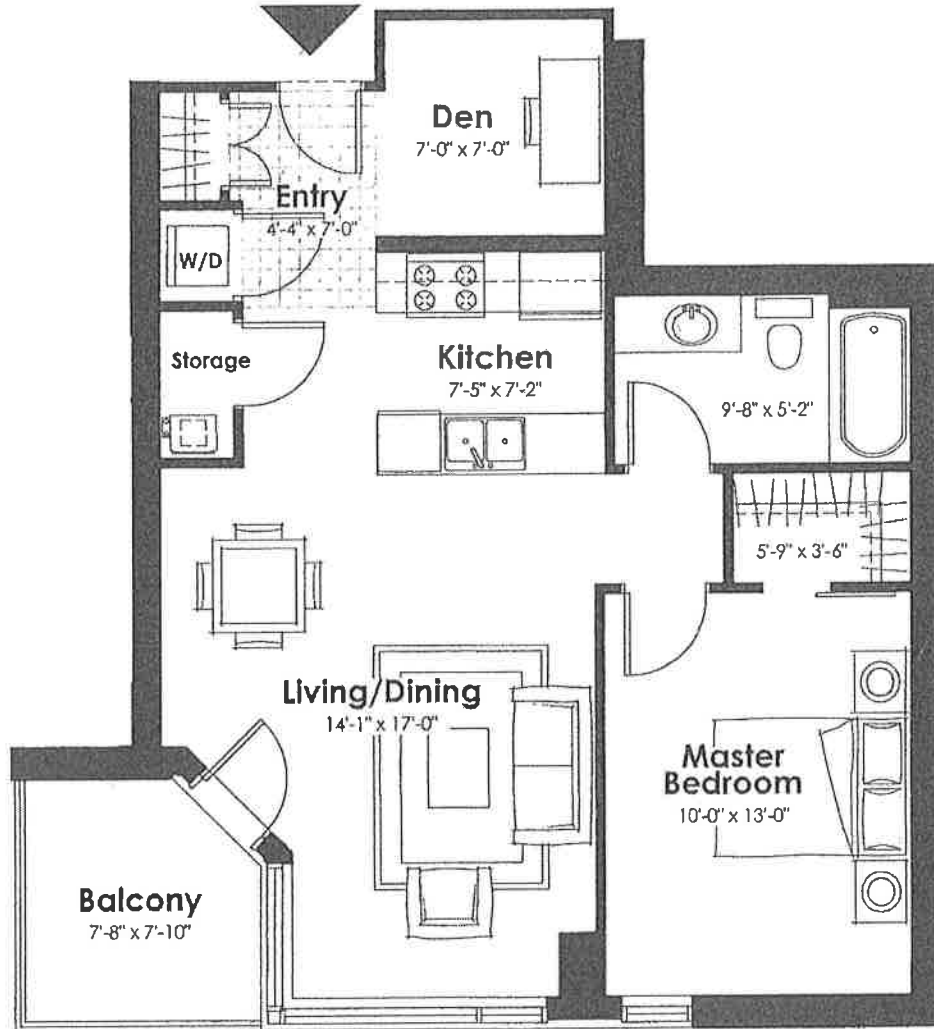
4th to 8th floor

Dimensions noted on plans may vary from final built product.

1 Bedroom + Den + Balcony 706 sq.ft. + 50 sq. ft. Balcony. Total Living Area = 756 sq. ft.



# Royal Scot



**key plan**

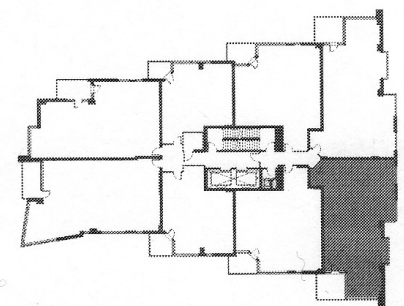
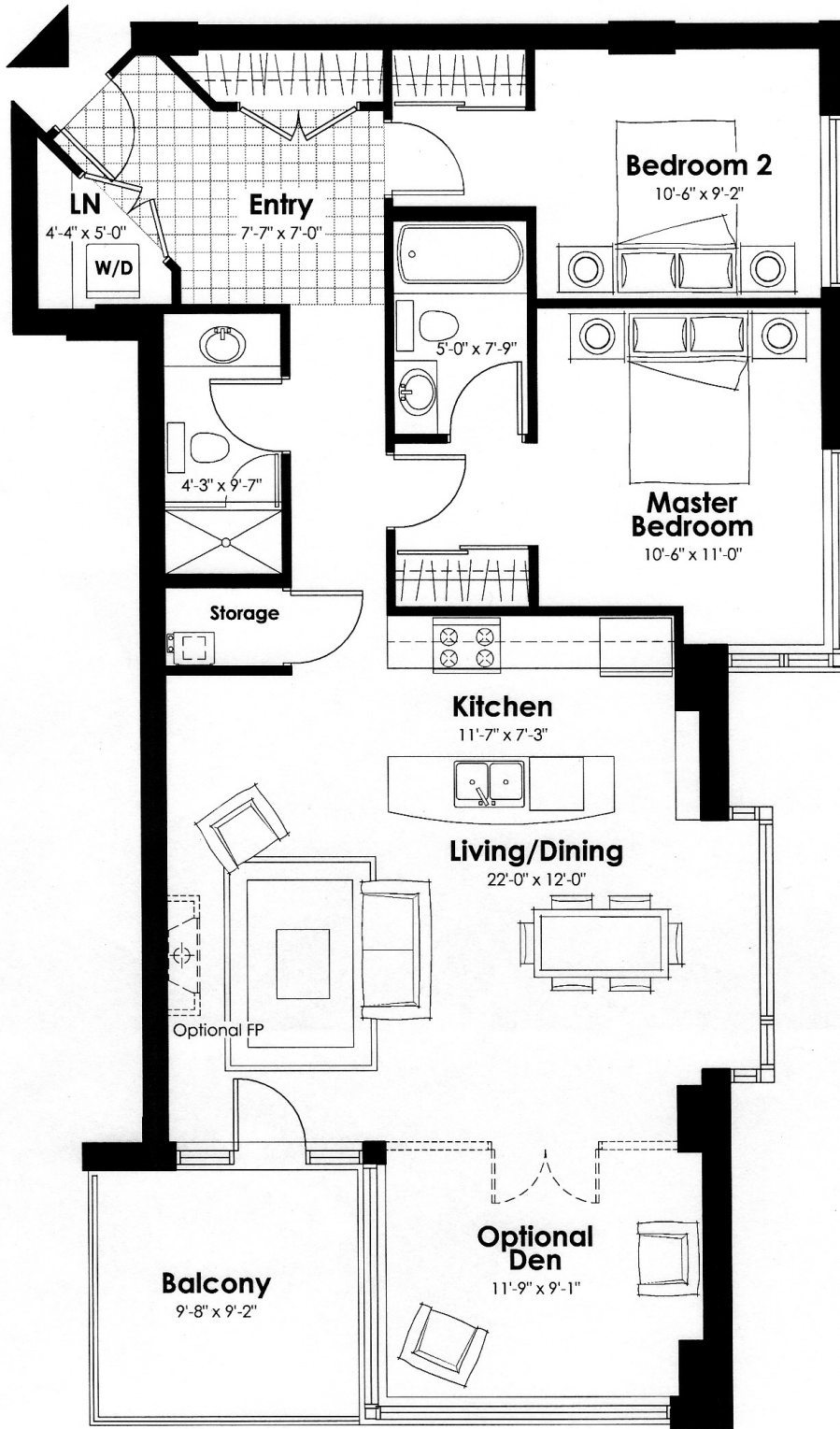
4th to 8th floor

Dimensions noted on plans may vary from final built product.





# Super Chief



**key plan**

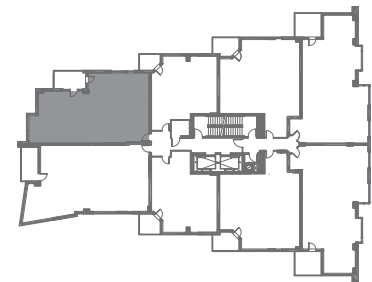
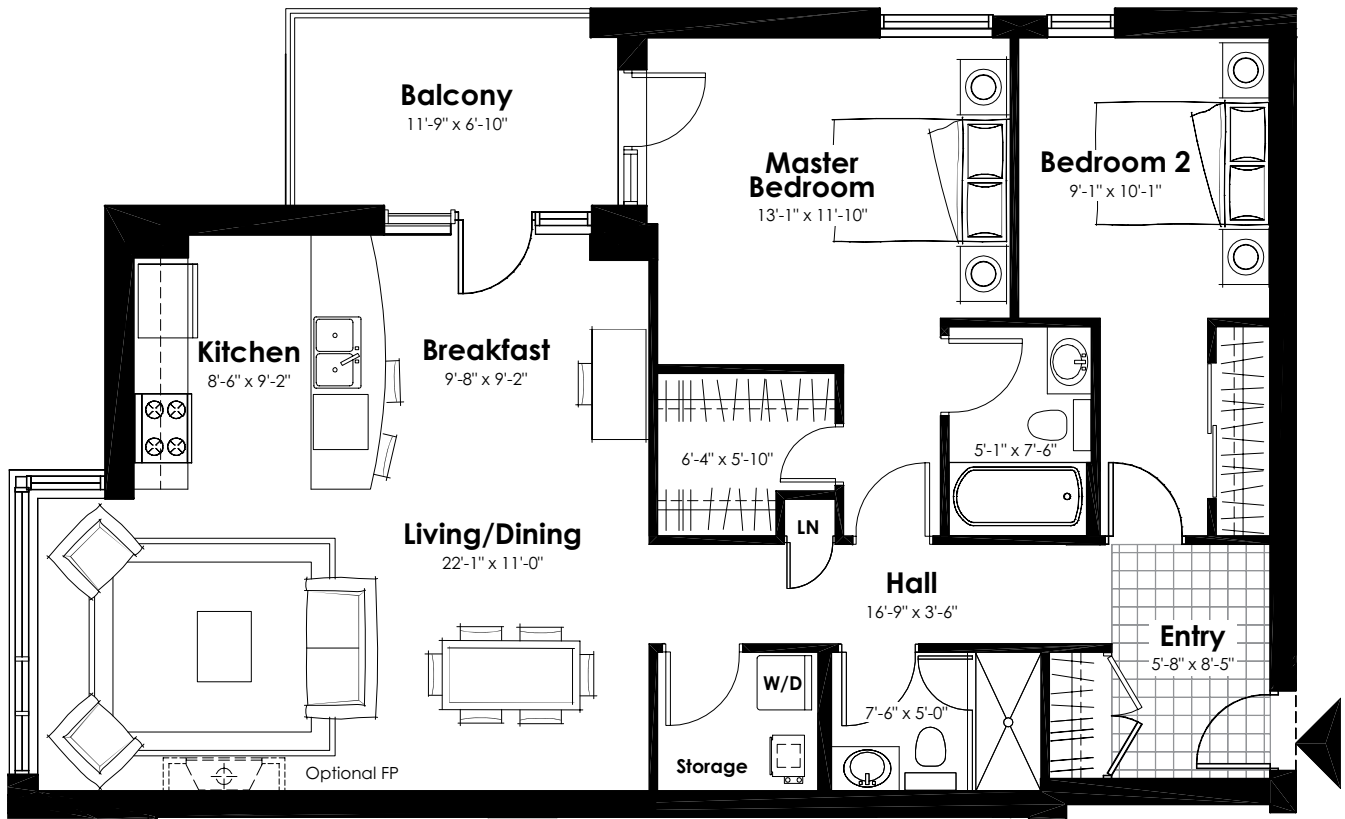
4th to 8th floor

Dimensions noted on plans may vary from final built product.

2 Bedrooms + Balcony 1136 sq.ft. + 68 sq. ft. Balcony. Total Living Area = 1204 sq. ft.



# Bullet Train



**key plan**

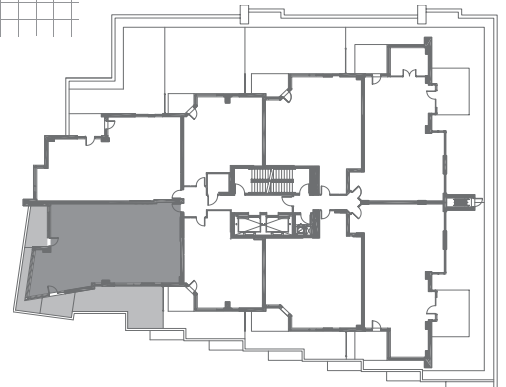
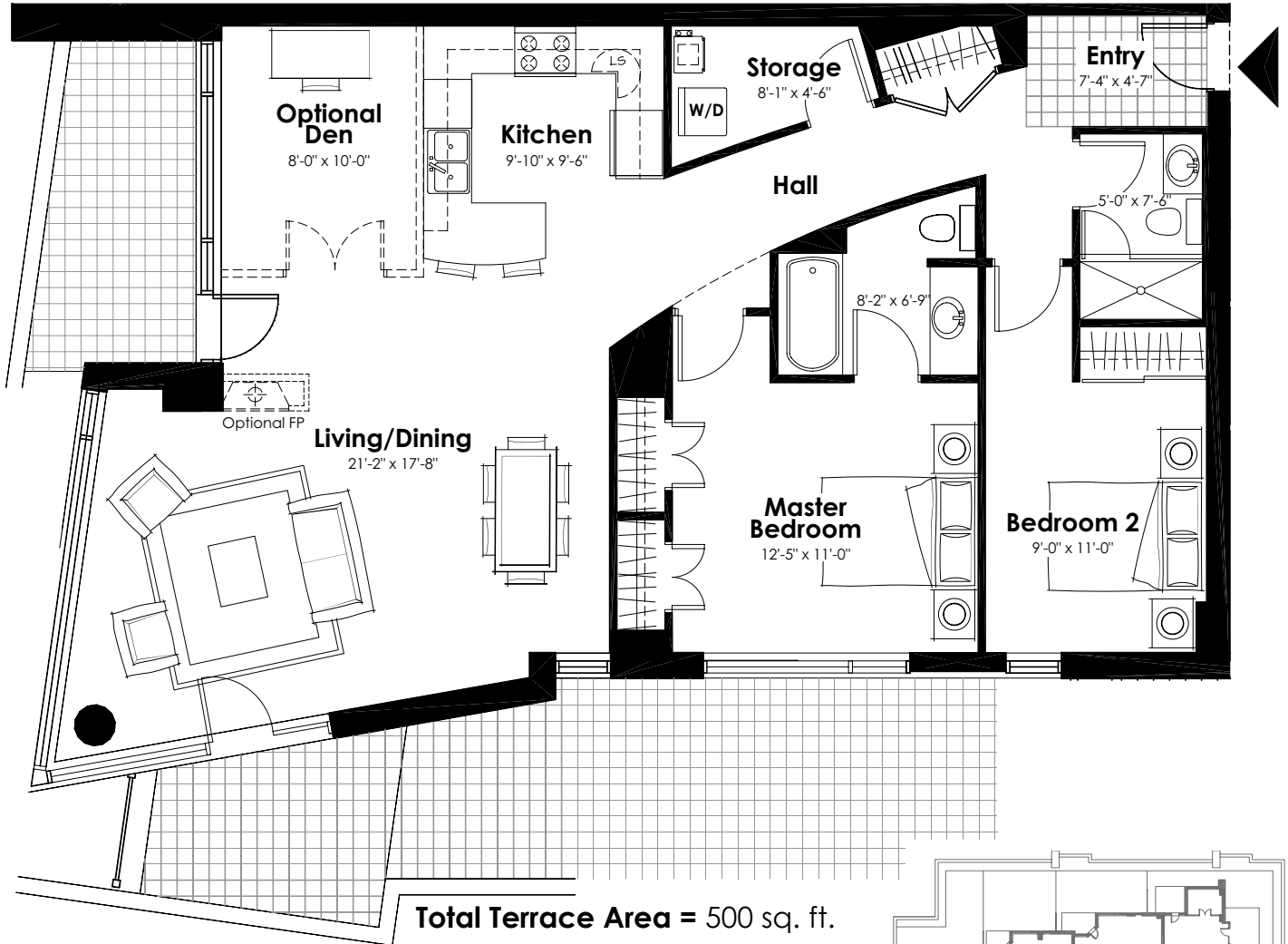
4th to 8th floor

Dimensions noted on plans may vary from final built product.

**2 Bedrooms + Den + 2 Terraces** 1272 sq.ft. + 500 sq. ft. Terraces. **Total Living Area = 1772 sq. ft.**



# Transatlantic



**key plan**

terrace level - 3rd floor

Dimensions noted on plans may vary from final built product.